

The Tattler

Central Coast California Unit – Region 12



Issue #2, February 2018



2018 Rally Schedule

- JANUARY 19-21 – Port San Luis Harbor (Avila Beach, Overflow Area)
Host: Terri and Tom Reay
- FEBRUARY 23-25 – Death Valley (Furnace Creek)
Hosts: Tom and Teresa Tighe & Mark and Shelly Griffin
- MARCH 9-11 – San Juan Bautista (Betabel RV Park)- Unit Business Meeting
Host: Jim and Yvonne Savage & Susan and John Barrett
- APRIL 6-8 – Pinnacles National Monument - **Make your own reservation!**
Hosts: Mike and Roxy Gross & Michael and Nancy Jackson
- MAY 18-20 – San Simeon State Park (Washburn Campground)
Hosts: Tom and Teresa Tighe & Brad and Linda Bailey
- SEPTEMBER 14-16 – Big Bear Lake (Holloway's Marina and RV)
Hosts: Michael and Marsi Peterson & Carol and Bruce Yeoman
- OCTOBER 12-14 – Camp Comfort, Ojai CA.
Hosts: Paula and Ed Poll, Dave Temple, & Cal and Peggy Meuser
- NOVEMBER 16-18 – Chula Vista KOA (San Diego)
Hosts: Jot and Linda Hollenbeck & Bob and Linda Minder
- DECEMBER 7-9 – Pismo Sands RV – Business Meeting/Election of Officers
Hosts: Judy and Walt Bremer, Pam and Stuart Lindsay, & Carol Cunningham



Central Coast Unit

The Central Coast California Unit encompasses the scenic California coastal counties of San Luis Obispo, Santa Barbara and Ventura but our members come from all around Southern California! We are an active, social group, which participates in local, regional and international rallies. We are dedicated to the Creed created long ago by the Airstream founder, Wally Byam. Though Wally has passed, the words and wisdom of his Creed live on in the many Airstream Clubs that remain active to this day. Established on April 10, 1965, we continue to enjoy "Fun, Friendship & Camping."



Central Coast California Airstream Club Board

Officers

- President – Linda Hollenbeck #4818
- Co-Vice Pres. - Lynne Valley #3012
- Bruce Yeoman #4197
- Secretary - Carol Cunningham #4895
- Treasurer - Bob Minder #4195
- Past Pres. - Paula Poll #8252

Directors:

- One Yr. – Mike Gross #1469
- Mark Griffin #1872
- Two Yr. – Ruth Coffin #6141
- Judy Bremer #3884

Operations:

- Membership – Gary Mellinger #2002
- Webmaster – Walt Bremer #3884
- Tattler – Mike & Marsi Peterson #2638

Club Website Links:

- [Central Coast CA Unit Website:](#)
- [CCC Facebook Page:](#)
- [Airstream Region 12 Website](#)
- [Region 12 Cali Rally Website](#)
- [WBCCI International Website:](#)
- [WBCCI Twitter Feed:](#)

President's Message

Linda Hollenbeck

Happy February,

The Avila Beach rally was well attended, considering the Thomas Fire and Floods. The sun was out and the wind reminded everyone it was January. I heard the group didn't let the wind ruin a good time. With a little ingenuity, Tom and Terri Reay used their 20 Flying Cloud as the kitchen and buffet serving center. I hope you enjoy Terri's first rally report. Well-done Terri! Also, thanks go out to Judy and Walt Bremer for co-hosting. Experienced co-hosts can really encourage our first timers.

CCC looks ahead to Death Valley this month and all it's hidden and not so hidden treasures. In March we travel to the Salinas Valley to discover the Steinbeck House, Mission San Juan Bautista and up the road about 20 miles, Gilroy. I can almost smell the garlic from here.

As a reminder, at the April Pinnacles National Park rally, you will discover how some 23 million years ago multiple volcanoes erupted, flowed, and slid to form one of our newest national parks.

Find rally coupons for these events and more coming soon, here in The Tattler and on our website.

I want to thank our hosts and organizers for making our rallies interesting and everyone attending for making them fun. To borrow from our Blue Beret membership chairperson, Teresa Taylor, "We join for the Airstream and stay for the friends."

See you down the road,



Joshua Tree Rally, Jan. 2012



Join us at a Rally!

Membership Report

Gary Mellinger, Membership Director

Hello CCC Members and a warm welcome to our newest Central Coast California Club member, **Dave Gardner** of Oxnard, California. We hope that you enjoy and take advantage of all that our Club has to offer. Be sure to check out our CCC website at centralcoastairstream.wbcci.net, paying particular attention to the "Rallies" tab as well as the "Newsletters" tab. Here can be found information about locations where we will be hosting future rallies as well as other pertinent information. In researching past Tattlers, one may discover Tech Information that one might not have been aware of, regarding one's rig. Also to our newest members as well as our more tenured members, please request admittance to our closed-to-the-public Facebook Page by using your search box on Facebook Central Coast California Unit, and requesting admittance. Our administrators will gladly add you so that you won't miss out on the Up-to-the-Minute news and photos from our Unit's members.

It looks like our 2018 Rally season is off to a great start. In January, our hosts and guests braved the

cold and winds for a fun rally at Avila Beach. Personally, I was envious of the lighthouse tour, as Christa and I couldn't make it for the rally; however, we did have the pleasure of visiting for a while on Saturday afternoon with the group. In only a few days, our Club will be heading off for Death Valley which has always been an exciting location for us. There is so much to see and explore there. March and April look to be promising, as Betabel RV Park will be a new location at which our Unit will rally, and the Pinnacles Campground has been remodeled since our last visit there years ago. Our May events include camping at San Simeon, and we are also looking into the possibility of attending the Santa Maria Elks Rodeo for those who are Elks Club members. We hope to see everyone at Betabel and remember that we are planning a Business Meeting shortly after breakfast on Saturday.

Safe Journeys and Cheers to Fun, Friendship and Camping.



Member Profiles

Lynne & Keith Valley Co-VP & Director

Our Airstream journey started twelve years ago with a 19ft 2006 Bambi, which grew to a 25ft Flying Cloud, and then to a 30ft 2014 Classic Keith lives in during the week, and a 21ft. 1993 Sovereign we use for weekend and short distance camping. We enjoy CCC rallies, travelling to Colorado, and our cross country National Caravan to the Upper Peninsula of Michigan.



In October we will have been married 25 years, sharing 2 daughters and 2 grandchildren. Lynne taught school for 45 yrs. and is enjoying being retired and Keith works as a supervisor for a government contractor. Keith enjoys boating and woodworking, Lynne spends her time with the grandchildren, caring for her 7 hens, a rabbit, a cat, and the 3 Yorkshire Terriers and African Grey parrot that travel with us. She is also learning to play the piano.



Having an Airstream has changed our life. Road trips offer a unique opportunity to see and appreciate the breadth and beauty of our country, stopping where and when we want, and setting our own pace. Our involvement in WBCCI and CCC has provided us with life long friends and experiences.

Lyell & Russell Hicks New Members

We are new to Airstream life, but not to travel or camping...Lyell was a Girl Scout leader and also camped with family to go water skiing. Russ is a retired Marine, and later camped in his 5th wheel. In 2009 we both retired from the Aerospace world, and since then, have been traveling as much as possible. We live in Simi, have five daughters, 11 grandchildren, and one great grandchild.

We joined Simi Valley Corvettes in 2002 and have driven thousands of miles on Corvette runs—the two longest being Carlisle PA (13 cars) and Victoria, Canada. The two biggest differences traveling by Airstream will be being able to take a lot more “stuff” with us, and having a lot more room to spread out!

When not traveling or celebrating with family, Russ golfs, thinks of challenging projects to build, and enjoys repairing all the things Lyell breaks. Lyell enjoys shopping, gardening, yoga and Pilates, and Bunco with friends. When I learned my high school friend Ann Rector Smith and hubby Bruce were members, I knew this was the group for us! Had a great time on our first run to Flying Flags, and looking forward to many more!



Club Membership:

- New Members: 1
- Total Members: 64 families, 10 affiliates = 74 unit members

Annual Membership Fees:

- WBCCI Membership = \$65 + CCCU Membership = \$80 total
- Join or renew at <http://wbcci.org>



Latest New Members

- Robert & Cindy Markwith, Eugene
Join 12/17 | 2008 27' Safari
- Glen & Jane Gold, Shasta Lake
Join 1/18 | 1969 25' Tradewind
- Mark & Lesa Smith, Los Osos
Join 1/18 | 2017 16' Bambi
- Dave Gardner, Oxnard
Join 2/18 | 2018 Interstate GT

Avila Beach Rally Report

by: Terri Reay

We had a little rain Thursday night, but 7 rigs came with an 8th arriving on Friday. Sadly, the 101 remained closed due to the Thomas Fire and Floods. About 6 other campers couldn't make it.

The rally in Avila was on the 'Edge.' There were great views of the ocean, high tides with amazing waves, surfers, wildlife, the pier and the harbor. On Friday some folks went for a bike ride, others enjoyed the town of Avila and others did errands. In addition to the 8 rigs, 16 campers, we had some visitors, an LA affiliate (local) including a Chinese foreign exchange student joined us for dinner on Friday night. Due to the very cool breezy conditions we served our Taco Rice buffet from inside our 20 ft. Flying Cloud. With various folks tow vehicles (trucks) we tried to make a wind block for the eating area. We seemed to do a good job as most folks enjoyed the gas campfires and stayed for dessert, a variety of pies from Apple Farm.

Saturday morning we had a great "Tips" workshop lead by Walt

Bremer. Folks took notes and pictures and good discussions followed. As noon approached 6 or 8 folks attended the Avila Lighthouse tour and other folks walked to the pier for lunch. Before we dispersed for the day we had two more members drop by, one from Simi and one from Santa Ynez.



Everyone returned Saturday evening for our potluck dinner and because of the wind, we set up and served from inside the 20 footer again! While enjoying Poke appetizers we had more visitors, potential members, who just bought an Airstream but hadn't even taken delivery yet. It was impressive how their fellow 'Airstreamers' welcomed them and were so willing to give tours and tips about their rigs.



After dinner we continued to enjoy our trifecta gas fire pits, conversation and then a "who done it story" on the history of the sinking of the SS Montebello by Bill Almas.

Sunday morning was comfortable and sunny and folks did not seem too eager to rush home. We even had another new member from Los Osos drop by to check out what a rally is like.

Living on the Edge in Avila was a small but successful rally with most folks coming from San Luis Obispo County, from Atascadero to Oceano on the South with Bakersfield sandwiched in there.

Being a first time host we couldn't have done it without the help and guidance of our co-hosts Walt and Judy Bremer. They are amazing and generous folks, with their time and knowledge. Thank you Walt and Judy.

Avila Beach Activities

- Lighthouse Tours
- Fun Food
- Campfires
- Beach Walking
- Kayaking
- Bicycling
- Exploring
- Visiting



Great food and wonderful company around a campfire, overlooking the ocean.

Central Coast California WBCCI Rally
February 23, 24 and 25 (Friday-Sunday), 2018

"Death Valley"

Furnace Creek Fiddlers' Campground
328 Greenland Blvd.,
Death Valley, CA 92328

Hosts: Tom & Teresa Tighe and Mark & Michele Griffin

February 2018



Tentative Schedule

Friday, Feb 23:

5:00pm Social Hour - appetizers provided by hosts

6:00pm Barbeque dinner - provided by hosts

Saturday, Feb 24

8:30am Continental Breakfast - provided by hosts

5:00pm Social Hour - Appetizers provided by hosts

6:00pm Mexican Potluck dinner - Entrees provided by hosts; bring a side or dessert

Sunday, Feb 25

8:30am Continental Breakfast - provided by hosts

11:00am Check out

Campground has: WIFI, good cell reception, gravel sites, back-in only, **no hookups** (water, sewer, or electrical). A dump station and fresh water are available just across Hwy 190. Pet charges: None.

Access to pool, shower and sports courts facilities at Furnace Creek Ranch Resort are included with your campground fee.

Rally Information

General Information: Fiddlers' Campground is adjacent to the Ranch at Furnace Creek.

Directions: See Information Sheet for all route options

West Entrance: Hwy 395 North, past Olancho, Hwy 190 East to Furnace Creek

East Entrance: I-15 East to Baker, Hwy 127 to Death Valley Junction, Hwy 190 to Furnace Creek

Meals Included: Friday appetizers and dinner, Saturday breakfast, Saturday appetizers, Sunday breakfast.

What to Bring: Bring your own drinks and coffee and your WBCCI badges. Because we are dry camping, table service will be provided by hosts to keep washing to minimum: paper plates and plastic drinking cups and cutlery.

Check-in: Go to site first and then to Registration

Check in: Friday 12:00 pm

Check out: Sunday 11:00 am

Quiet time: from 11:00 pm to 7:00 am, but generators may be run at night.

Furnace Creek Fiddlers' Campground Coupon

Name _____	WBCCI No. _____
Address _____	
City, State, Zip _____	Email _____
Phone _____ Cell _____	Rig length _____
Emergency Contact: Name _____	Phone: _____
Rally nights: Thursday ____ Friday ____ Saturday ____ Sunday ____	\$18.00/day \$ _____
Rally fee: \$30/rig, \$15/single	\$ _____
	Total enclosed \$ _____

Please mail coupon and check (payable to Central Coast Unit WBCCI) by January 25th to:

Tom & Teresa Tighe, 6024 Quail Ct., Orcutt, CA 93455-6053

Questions: Contact Tom Tighe at 714-913-8510 or ttnorca@gmail.com

Central Coast California WBCCI Rally
February 23, 24 and 25 (Friday-Sunday), 2018
Furnace Creek Fiddlers' Campground
328 Greenland Blvd.,
Death Valley, CA 92328

Information Sheet

Check-in at 12:00 pm Check out by 11:00 am
Campground fee is \$18/day - NO HOOKUPS, dry camping, back-ins

Park your rig in your site then walk to "The Ranch at Furnace Creek" registration office, to check-in.
DO NOT PULL YOUR RIG TO THE REGISTRATION OFFICE as there is no space to turn around.

Directions to Fiddler's Campground

West Entrance:

Hwy 14 North to Hwy 395 North, past Olancho, Hwy 190 East to Furnace Creek (192 miles from Mojave)
BEST ROUTE

OR

Hwy 14 North to Redrock Randsburg Rd, to Hwy 395 North, to Hwy 190 East to Furnace Creek (179 miles from Mojave)

OR

Hwy 395 to Lone Pine, Hwy 136 East to Hwy 190 East to Furnace Creek (219 miles from Mojave)

East entrance:

I-15 East to Baker, Hwy 127 to Death Valley Junction, Hwy 190 to Furnace Creek (247 miles from Mojave)
Campground is located behind the gas station just south of the Furnace Creek Visitor Center

Gas Last good prices for gas are in: Mojave, Pearsonville or Ridgecrest. Gas in National Park is over \$4.00/gal.

Furnace Creek Amenities

Campground guests have access to "The Ranch at Furnace Creek" facilities: natural spring-fed swimming pool, shower facility, coin operated laundry, sports courts (including tennis courts, shuffle board, volleyball, Bocce ball, and basketball courts), restaurants (3) and coffee café.

Senior Annual Pass

For those who have a National Parks "America the Beautiful" Lifetime Senior Pass, **DO NOT FORGET IT**, entrance to Death Valley National Park is \$25. A Senior Pass grants access to all U.S. national parks and federal recreational lands, it costs \$80 if purchased at a federal recreational site, an additional processing fee of \$10 is added if the pass is purchased by mail order. Online and Mail in Senior pass applications are currently being processed within seventeen weeks. Until the current processing backlog of Senior Pass orders are shipped, your order confirmation will be honored for use at all agency sites.

Activities

Dark Sky area: Great area for star gazing; we will bring our telescope but bring yours if you wish.

Scotty's Castle: Currently open to guided tours only, closed to public otherwise, we are looking into booking a group tour for us.

Keane Wonder Gold Mine: Re-opened in November; one of best examples of gold mining; has aerial tramway.

Sightseeing Furnace Creek Visitor Center, Borax Museum, Zabriskie Point, Harmony Borax Works, Twenty Mule Team Canyon, Artist's Drive, Dante's View, Devils Golf course, Badwater Basin, Stovepipe Wells Village, Mesquite Flat Sand Dunes, Salt Creek, Ubehebe Crater, Father Crowley Vista and the Wildrose Charcoal Kilns.

Hiking: Easy (0.4 to 1.5 miles, flat to 185 feet elevation gain), 5 trails
Moderate (1.5 to 7 miles, 450 to 2,400 feet elevation gain), 9 trails
Difficult (8.4 to 14 miles, 2,200 to 3,000 feet elevation gain), 2 trails

Golf: Furnace Creek Golf Course is next to the campground. Rates are: \$73.50 with cart, \$60.00 walking.
Sundowner rates, which start at noon, are: \$47.50 with cart, \$35.00 walking.



JANUARY 18, 2018

Betabel RV Resort March 8 -11, 2018

EXPLORE HISTORIC CALIFORNIA- Join us on our adventure to Salinas Valley and San Juan Bautista. Rich in history, architecture, and abundant in agriculture. This campground is a perfect location to take a trip to the ocean, visit museums, or tour the towns. With local shops and restaurants

Thursday March 8, we have 10 sites booked for those who would like to maximize their stay! Check in at noon. Happy hour at **5 pm** at John and Susan's trailer. Bring an appetizer to share and your drink.

Friday March 9- Breakfast on your own.

12:00pm depart for Steinbeck House. Must arrive to restaurant no later than 12:45pm!

6:00pm Meet in Betebel Club House for Social hour and bring a Savory (appetizer) or a Sweet (dessert) to share. BYOB

Saturday March 10 - 8:30 AM-9:30 PM Breakfast provided by hosts in Club House. The business meeting will be held after breakfast at 9:30 pm in the Club house. All members are welcome to attend.

Saturday afternoon- spend the day on your own discovering the local area, visiting Mission San Juan, or the cozy town of San Juan Bautista.

Saturday March 10, 6:pm- Meet for dinner at Jardines de San Juan. This beautiful Mexican restaurant is just blocks from the San Juan Bautista Mission. More information to come, but please let us know if you are interested, as we would like to book a private room.

Sunday 8:30-9:30 am - Light breakfast provided in the Club House. Check out is 11:30. Safe travels home!



PAGE 1



Betabel RV Resort - San Juan Bautista

MARCH 8-11, 2017

STEINBECK HOUSE

BIRTHPLACE AND BOYHOOD HOME OF JOHN STEINBECK



PLEASE arrive early so you can join us for lunch at the Steinbeck House. We have reserved the restaurant for Friday, March 9, at 1:00pm. Cost is \$30.00 which includes Entree, salad, and dessert. Also coffee or tea. Includes tip. Wine and beer sold separately. Docent will give insight to John Steinbeck.

TRIVIA! *JIM SAVAGE IS A STEINBECK! WHO KNEW?*

RALLY INFORMATION

DIRECTIONS: TRAVELING NORTH ON 101, TAKE THE BETABEL RD EXIT AND TURN LEFT OVER FREEWAY TO BETABEL RD AND CONTINUE 1/8 MI. SOUTH TO PARK ENTRANCE.

CHECK IN: 12NOON

LOCAL ATTRACTIONS:

SANTA CRUZ BEACH AND BOARDWALK

MISSION SAN JUAN BAUTISTA

STEINBECK MUSEUM

BONFANTE GARDENS

TRIVIA!

BETABEL IS SPANISH FOR SUGAR BEET!



Jardines

With tall ceilings and windows, the Private Dining Room offers the perfect environment for either lunch or dinner. Join us on Saturday evening. We will order from Jardines extensive menu.



PAGE 2

**Betabel RV Resort Coupon**

Name _____ WBCCI No. _____
 Address _____
 City, State, Zip _____ Email _____
 Phone _____ Cell _____ Rig length _____
 Emergency Contact: Name _____ Phone: _____
 Food allergies? _____

Camping Nights: Mar. 9th Friday __ Mar. 10 Saturday __ @\$45.50/night \$ _____

Additional Nights: Mar 8 Thursday __ Mar 11 Sunday __ @50.54/night \$ _____

Rally Fee: \$35.00/ rig or \$17.50/single \$ _____

Steinbeck House Luncheon Mar. 9th@ 1:00pm \$30.00 person \$ _____

Total Enclosed: \$ _____

Please mail coupon and check (**PAYABLE TO CENTRAL COAST UNIT WBCCI**) by February 8th to:
 CCC Unit WBCCI, C/O Yvonne Savage 23519 Ash Court, Murrieta, CA 92562

OR

SEND PAYMENT VIA PAY PAL, ADDRESS ON CENTRAL COAST WEBSITE. PLEASE
 INCLUDE AN ADDITIONAL 74 CENTS TO YOUR PAYMENT FOR PAYPAL FEES. AND
 RETURN THIS FORM VIA EMAIL TO Yvonne Savage happyglampergal@gmail.com

Questions: Call Yvonne Savage (951) 852-1409 or email happyglampergal@gmail.com



Dinner at Jardines- order off menu. Dinner prices vary. Please
 go to website at <http://www.jardinesrestaurant.com/menu/> to view the
 full menu. We would like a group of 24 to reserve a private room..

How many will join us for dinner at Mar. 10 at 6 pm _____

**Central Coast California Unit WBCCI Rally
April 2018 Pinnacles Rally**

April 6-8

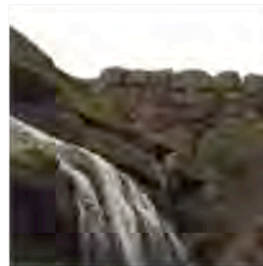
Pinnacle National Park Campground CA

5000 Highway 146 Paicines, CA 95043

Reserve at www.reserveamerica.com

Hosts: Mike & Roxy Gross (805.857.8788)

Michael & Nancy Jackson (805.748.6260).



Tentative Schedule

Thursday:

6:00 All American BBQ

Although not technically part of the rally, many plan to arrive on Thursday. Bring something (hot dogs, hamburgers, etc.) to throw on the barbeque and a side dish to pass. Hosts are making Cast Iron Upside-down cake for dessert.

Friday:

8:30 Breakfast of hearty oatmeal, fruit provided.

Spend the day exploring the park and caverns.

5 pm: Social Hour (light appetizers provided)

6:00 pm: Italian Night with lasagna, caesar salad, garlic bread and desert. Followed by campfires with s'mores, weather permitting.

Saturday:

8:30: Campfire breakfast of egg omelets in a Ziploc. Continue to explore the park, drive into town or Monterey.

5 pm Social Hour (light appetizers provided)

6 pm Mexican Night with Margaritas, beef & chicken chili, tortillas, beans and rice.

Sunday:

8:30: Continental breakfast provided

5 pm Smorgasbord: Baked ham, brown beans and whatever else campers have in their cupboards to add.

Rally Information

General Information: Pinnacles is the newest national park. It has truly majestic sights with lots of opportunity for hiking, touring or simply relaxing. **You need to make your own reservations for this rally.** We recommend Loop D as it has power. There may be sites available in the first come-first serve area or other loops (non-electric). Water is available from spigots but not at each campsite. To learn more, check out:

<https://www.nps.gov/pinn/index.htm>

Meals Included in Fee: Breakfast and dinner Friday, Saturday and Sunday. Lunch is on your own.

What to Bring: Please bring your dishes and utensils for all meals and your favorite beverage for Social Hour; hosts will provide light appetizers. We will not have use of a clubhouse so prepare for outdoor dining.

Directions:

From Hwy 101: Take Hwy 101 North to the town of King City. Exit at 1st Street. Turn right toward King City. Continue straight until 1st St turns into Bitterwater Rd (Monterey County G13).

Follow Bitterwater Rd until it intersects Hwy 25.

Turn left on Hwy 25 (North) and follow for ~15 miles.

Turn left onto Hwy 146 to enter the park.

Turn left into the Pinnacles Campground and check in at Pinnacles Visitor Center.

Safe Travel Home!

Pinnacles Coupon

Name _____ WBCCI No. _____

Address _____

City, State, Zip _____ Email _____

Phone _____ Cell _____ Rig length _____

Emergency Contact: Name _____ Phone: _____

Nights Present: Thursday ☐ Friday ☐ Saturday ☐ Sunday ☐ (for planning food) Site # _____

Rally Fee: \$35 /couple or \$20/single \$ _____

Please mail coupon and check (payable to Central Coast Unit WBCCI) by **March 15th** to:

Mike Gross 42076 Village 42, Camarillo CA 93012

Questions: Contact Mike (805.857.8787) or Roxy (805.857.8788)

mjgross7@gmail.com or roxygross@roadrunner.com

Central Coast California WBCCI Rally
May 18, 19 and 20 (Friday-Sunday), 2018
Hearst San Simeon State Park, Washburn Campground
500 San Simeon Creek Road, Cambria, CA 93428 / (805) 927-2035

Information Sheet

Hosts: Linda & Brad Bailey: H: 805-927-5889 C: 805-909-7547, 805-909-7548 (seabaileys@sbcglobal.net)
Teresa & Tom Tighe: C: 314-705-9455, 714-913-8510 (tdhuxford@earthlink.net, ttnorca@gmail.com)

You must make your own reservations for Washburn Campground:

Campground fee is \$20/day, plus \$7.99 reservation fee (Cancellation fee is \$7.99)
Sites are assigned when checking in at park entrance ranger station. **Dry camping**, no hook ups, back-ins.

Check-in at 2:00 pm **Check out by 12:00 Noon**

Online Reservations at Reserve California: <https://www.reservecalifornia.com/CaliforniaWebHome/>
Or, call (800) 444-7275.

When making reservations, please let them know you are with the Airstream Rally.

Please send an e-mail to the Baileys and Tighes with your arrival and departure dates.

Washburn Primitive Campground Amenities

This campground is approximately one mile inland from the beach on a plateau overlooking the Santa Lucia mountains and the ocean. Each campsite has a fire ring and picnic table. Water spigots, chemical flush toilets, and a sanitation station and water fill-up are nearby. **No showers.** Quiet hours are 10 pm to 6 am; Generators may only be operated between 10 am and 8 pm.

Links:

[Hearst San Simeon State Park](#) website

[San Simeon State Park Brochure](#)

[San Simeon State Park Campground Map](#)

Directions to Hearst San Simeon State Park

San Simeon State Park is located 2 miles north of Cambria and 5 miles south of the Hearst San Simeon Visitor Center.

From the South: Located 35 miles north of San Luis Obispo. From Highway 101, take the Highway 1 exit northwest.

From the North: Take Highway 46 west and then north on Highway 1

Activities

Cambria: "One of America's Prettiest Towns". <http://www.cambriachamber.org/>. Restaurants (the [Sea Chest](#) is a Cambria favorite), Shopping, Art Galleries, Moonstone Beach, Hiking Trails. Free Visitors Guide: <http://www.icloudmobilemedia.com/t/21275-cambria-magazine>.

Clydesdale Horse Riding Tours at Covell Ranch: covellscaliforniaclydesdales.com

Hearst Castle: www.parks.ca.gov/hearstcastle. Estate houses a world-renowned collection of art. William Randolph Hearst also built landscaped gardens and a private zoo on the property. Tour Reservations: www.hearstcastle.org.

Monterey Bay National Marine Sanctuary (MBNMS): <https://montereybay.noaa.gov/>. Marine ecosystem encompassing shoreline length of 276 miles from Cambria to Monterey, with Coastal Discovery Center at San Simeon Bay.

Elephant Seals: www.elephantseal.org. Various viewing points north of San Simeon; May is end of molting season.

Piedras Blancas Light Station: www.blm.gov. Has been in continual operation since 1875. Owned and operated by Bureau of Land Management since 2001, light station is still in use as navigational aid and for scientific research.

Additional Activities: Hiking, Beachcombing and Tide Pooling, Surf Fishing, Kayaking, Surfing, Windsurfing, Yoga in Nature at Leffingwell Landing, Moonstone Beach on Saturday/Sunday (<http://tula4you.com/>).

NOTE: Rally Coupon will be available on Central California Coast Unit website in March then in April Tattler.

Club News and Notices



Tattler Editors
Michael and Marsi Peterson
michael.peterson.ccc@gmail.com

Rally News and Notices:

- For Rally Coupons check our website at this link:
- Don't miss the upcoming Rallies & Plan a Flash Rally!
- Learn how to Host a Rally: Volunteer to Co-Host - just contact one of the hosts

Upcoming Events

- WBCCI: 2018 Cali Rally - April 19-22, in Parkfield ,CA. - Full
- WBCCI: 2018 Region 12 Rally - Oct 3-7 in Las Vegas, NV
- WBCCI: International Rally June 23-30 | Salem OR.
Now has a 3 day stay option.
- Check Club Birthdays in Facebook

Give us your inputs for postings, notices, corrections or links for the Tattler.

Club Resources and Links

- Membership Roster and Contact List:
 - Contact Walt Bremer, Webmaster, for access if you need it: [wbremmer@me.com](mailto:wbremer@me.com)
- Read Past Issues of *The Tattler* Newsletters:
- To Join or Renew your Membership:
 - Through the CentralCoastCaUnit's website
 - Through WBCCI International (fastest)
- Planning a Rally? Download the planning guide

Airstream - Fun & Social Stuff

Facebook Links

- WBCCI Wally Bynam Airstream Club
- CentralCoast CA. Unit - Our Facebook page
- Airstream Addicts - amazing pictures

WBCCI Websites

- WBCCI Region 12 Website - our parent Club
- WBCCI Airstream Club Website

Twitter Links to follow:

- WBCCI Airstream Club
- WBCCI Region 12 or #Airstream



Join us and Have Fun at a Rally!

